



INCLUSIVE LEADERSHIP PROGRAMME



**FAIRPLAY
EMPLOYER
LEADERSHIP**

**CREATING INCLUSIVE LEADERS,
WHO FOCUS ON BUILDING AND
MAINTAINING EFFECTIVE TEAMS,
WHERE EVERY TEAM MEMBER
FEELS THAT THEY BELONG.**



**FAIRPLAY
EMPLOYER
LEADERSHIP**



WELCOME



Stephanie Griffiths
COMMERCIAL DIRECTOR

Our Inclusive Leadership Programme has been designed with one aim in mind;

“CREATING INCLUSIVE LEADERS, WHO FOCUS ON BUILDING AND MAINTAINING EFFECTIVE TEAMS, WHERE EVERY TEAM MEMBER FEELS THAT THEY BELONG.”

We develop leaders to be emotionally intelligent and effective.

We equip them with the tools needed to confidently manage hybrid & agile teams and focus on wellbeing.

We create future focussed leaders, who can build high performing teams to ensure organisation success and sustainability.

There are ten learning modules and a suite of workshops that interconnect with each other to create the Inclusive Leadership Programme. Our learning modules are exploratory learning experiences, whereby we focus on practical learning and discussion, to ensure that new skills and knowledge can be transferred and applied in the workplace immediately.

THIS LEARNING JOURNEY WILL;

- Strengthen & develop leadership skills
- Offer practical tools to enable participants to lead on inclusive practice
- Provide an engaging and interactive learning experience
- Participants can also choose to complete an **ILM Level 5 Award** in Leadership & Management



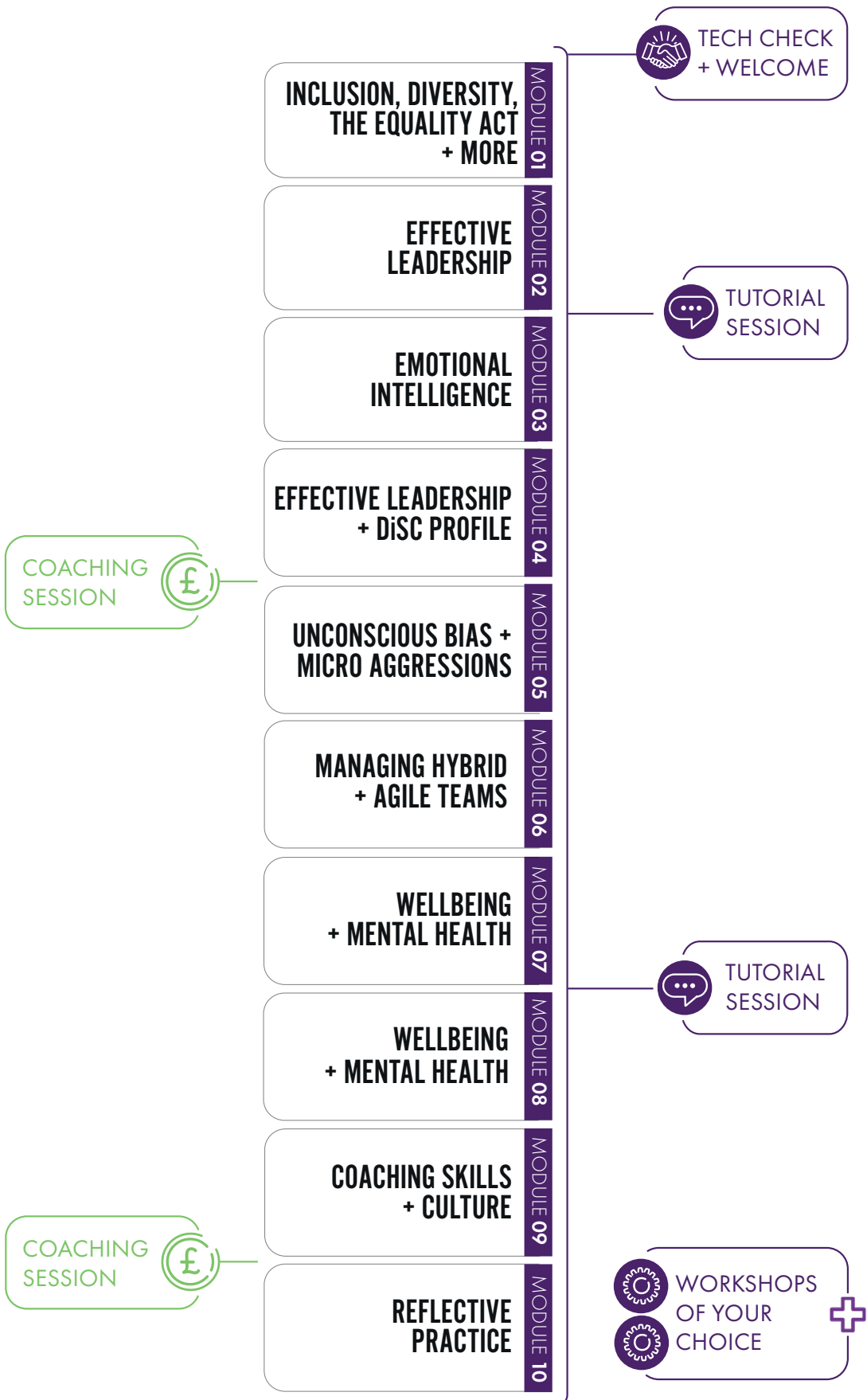
LEARNING JOURNEY



ONE MODULE A MONTH



4 HOURS PER MODULE



**FAIRPLAY
EMPLOYER
LEADERSHIP**

ABOUT THE MODULES

MODULE 01

INCLUSION, DIVERSITY, THE EQUALITY ACT +MORE

Build your confidence to take responsibility for creating a team culture where everyone feels that they belong. Gain the skills and knowledge to develop and lead on inclusive practice.

MODULE 03

EMOTIONAL INTELLIGENCE

Understand and develop your emotional intelligence in the workplace. Utilise your personal strengths to motivate and empower others and explore your personal resilience.



MODULE 02

EFFECTIVE LEADERSHIP

Recognise current leadership styles used within your organisation and understand your own leadership style to successfully adapt in an ever changing world.



MODULE 04

EFFECTIVE LEADERSHIP + DiSC PROFILE

Evaluate your own ability to lead and motivate others and create a personal development plan to identify areas of growth.



MODULE 05

UNCONSCIOUS BIAS + MICRO AGGRESSIONS

Understand the impact of bias in organisation processes, recognise your own biases, and take the lead on educating others on the impact of bias and positive challenge.



MODULE 07

WELLBEING + MENTAL HEALTH

Confidently manage and support wellbeing across your organisation. Understand the importance of your role in communicating and supporting wellbeing approaches.



MODULE 06

MANAGING HYBRID + AGILE TEAMS

Learn how to lead and manage in any organisational structure. Understand practical tools and techniques to achieve effective team performance, improve collaboration and create an inclusive and diverse environment.

MODULE 08

WELLBEING + MENTAL HEALTH

Understand your organisation's current approach to wellbeing and mental health. Recognise your role in creating a positive workplace where wellbeing initiatives align with the People Strategy.

MODULE 09

COACHING SKILLS + CULTURE

Understand the benefits of a coaching culture for future leadership. Explore coaching models and techniques, and experience practical coaching skills.



MODULE 10

REFLECTIVE PRACTICE

Reflect on your learning and identify your support network, giving you the increased confidence to set and implement your commitments to change, to create an inclusive workplace.




**FAIRPLAY
EMPLOYER
LEADERSHIP**


WORKSHOPS


Online learning experiences focused on specific topics to support the understanding of inclusive leadership.

The workshops will provide a deeper understanding of the legalities and impact of systemic inequalities in workplace process.

Focusing on allyship and best practice approaches as a leader.

 Each participant has the opportunity to attend all of the listed suite of workshops.

 One place on each workshop is included in the programme cost.

 2 hours

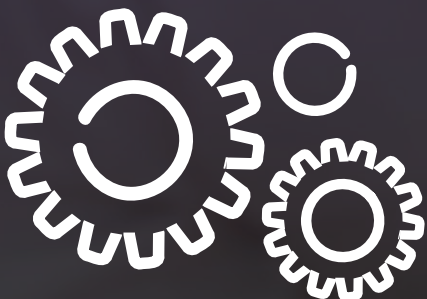
 **GENDER EQUALITY**

 **RELIGION & BELIEF**

 **RACIAL EQUALITY**

 **LGBTQ+ AWARENESS**

 **DISABILITY AWARENESS**





COSTS

INCLUSIVE LEADERSHIP PROGRAMME

10 X MODULES

5 X WORKSHOPS

ILM LEVEL 5 AWARD [ON YOUR COMPLETION OF ASSIGNMENTS]

TOTAL**£1,460.00 +VAT**

ADDITIONAL OPPORTUNITIES

WORKSHOPS.....**£75.00 +VAT pp**

INDIVIDUAL MODULE.....**£175.00 +VAT**

MODULE 4 INCL. DISC PROFILE.....**£310.00 +VAT**

**WORK WITH US TO
ERADICATE INEQUALITY IN THE
WORKPLACE, HELP TO CREATE A
WORLD WHERE EVERYONE CAN
ACHIEVE AND PROSPER; WHERE
EVERYONE IS VALUED FOR WHO
THEY ARE AND WHAT THEY DO.**



**FAIRPLAY
EMPLOYER
LEADERSHIP**



0300 065 0445



fairplayemployer@chwaraeteg.com



www.fairplayemployer.com